

C:\Users\wang4422\AD\Documents\P164-25-078_E_26_jian.wang.KLUC.rvt

2026-02-06 12:01:51 PM

LEGEND OF SYMBOLS			
SYMBOL	DESCRIPTION		
	EXISTING LIGHTING FIXTURE TO BE REMAIN.		
	LIGHTING FIXTURE WIRED ON EMERGENCY CIRCUIT.		
	LIGHT SWITCH		
	CEILING MOUNTED EXIT SIGN (GREEN PICTOGRAM TYPE) LUMACELL, LA SERIES, CAT. #LA-3-WU OR APPROVED EQUAL.		
	WALL MOUNTED EXIT SIGN (GREEN PICTOGRAM TYPE) LUMACELL, LA SERIES, CAT. #LA-3-WU OR APPROVED EQUAL.		
	FIRE ALARM HEAT DETECTOR		
	FIRE ALARM PULL STATION		
	FIRE ALARM SMOKE DETECTOR		
	FIRE ALARM SPEAKER		
	15A, 120V SINGLE RECEPTACLE		20A, 120V SINGLE RECEPTACLE
	15A, 120V DUPLEX RECEPTACLE (5-15R)		20A, 120V DUPLEX RECEPTACLE (5-20R)
	15A, 120V QUAD RECEPTACLE (DOUBLE 15A DUPLEX RECEPTACLES)		20A, 120V QUAD RECEPTACLE (DOUBLE 20A DUPLEX RECEPTACLES)
	SURFACE-MOUNTED FLOOR BOX C/W DUPLEX RECEPTACLE		
	POWER POLE C/W DATA AND 20A QUAD RECEPTACLES (LEGRAND, AMDT-P4 SERIES, CAT. #250TP4 OR APPROVED EQUAL)		
	1P/2P DIRECT CONNECTION		3P DIRECT CONNECTION
	DATA OUTLET		TELEPHONE OUTLET
	SURFACE-MOUNTED FLOOR BOX C/W COMMUNICATION OUTLET		
	WHITE WIRE MESH CABLE TRAY 2"(H) X 4" (W) C/W ALL REQUIRED FITTINGS, CENTER SUPPORT, L BRACKET & ACCESSORIES. INVENT CADDY, WIRE BASKET TRAY, SERIES CAT. #WB2X4WH.		
	WIRELESS ACCESS POINT		
	ELECTRICAL PANEL		
	JUNCTION BOX / PULL BOX		
EX	EXISTING TO REMAIN	OC	OVER COUNTER
R	EXISTING TO BE REMOVED	UC	UNDER COUNTER
ER	EXISTING TO BE RELOCATED	WP	WEATHER PROOF
RE	EXISTING IN RELOCATED POSITION	AFF	ABOVE FINISHED FLOOR
GFI	GROUND FAULT CIRCUIT INTERRUPTER (AS PER ESA)	CLG	CEILING MOUNTED

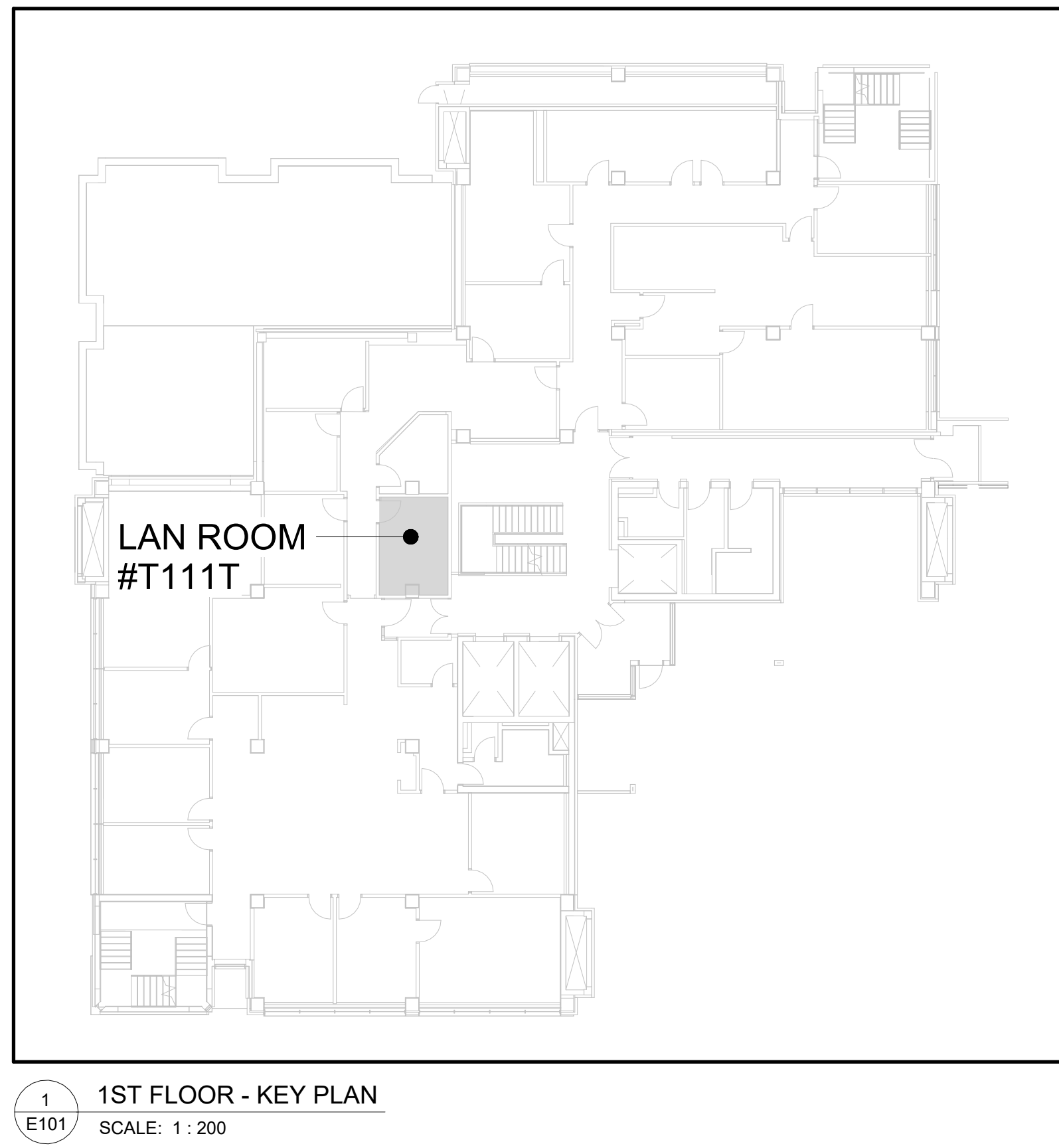
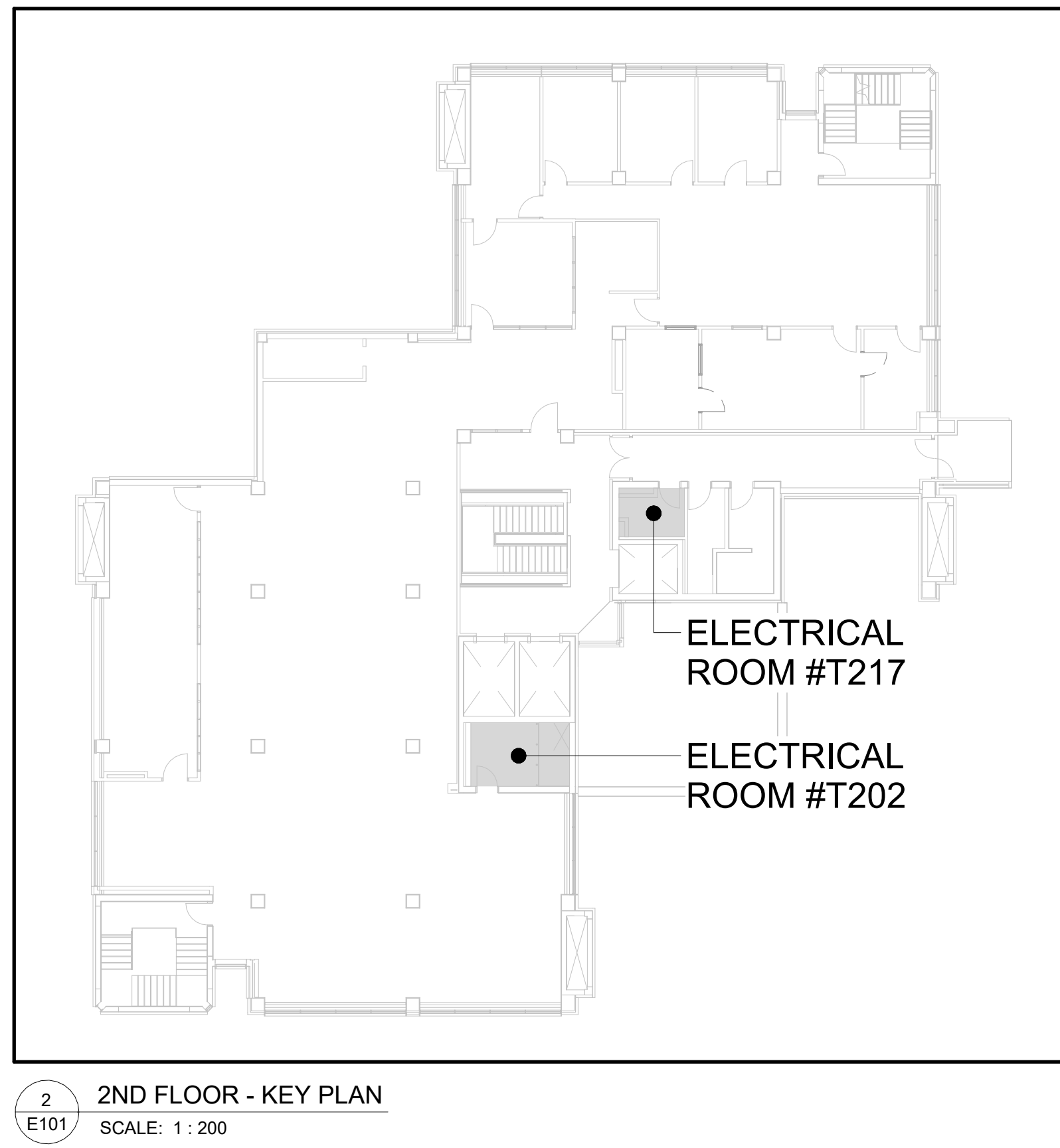
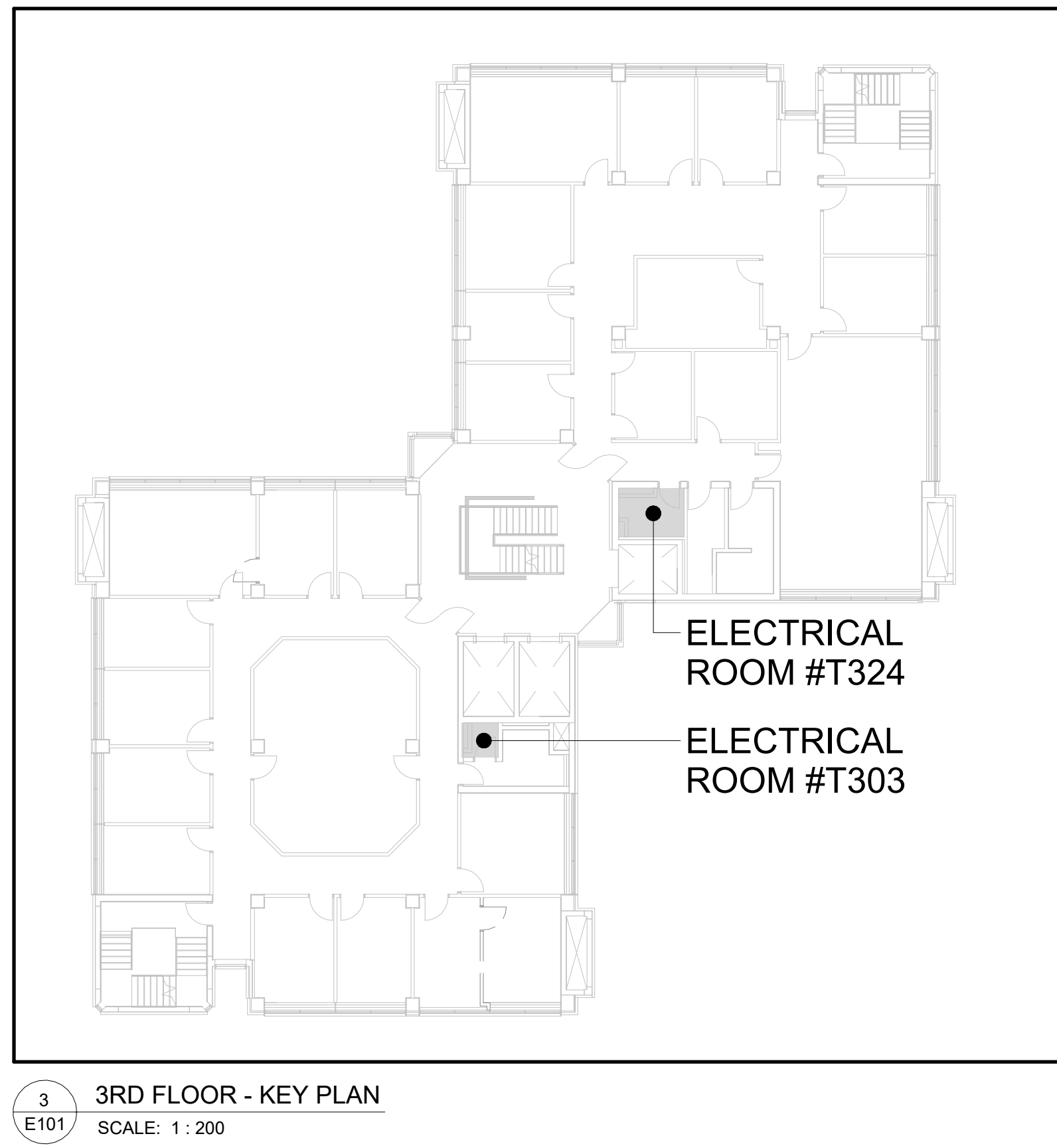
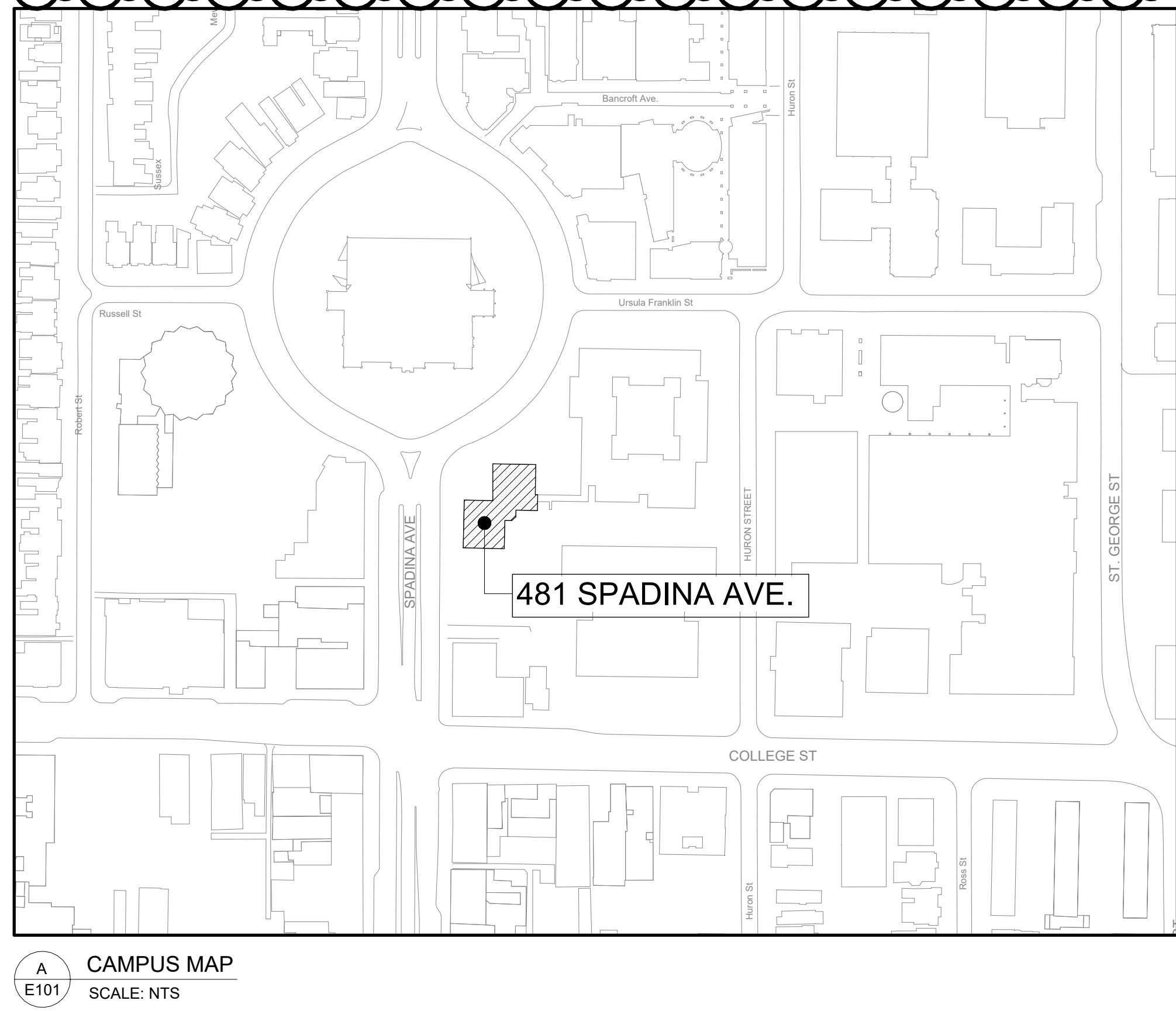
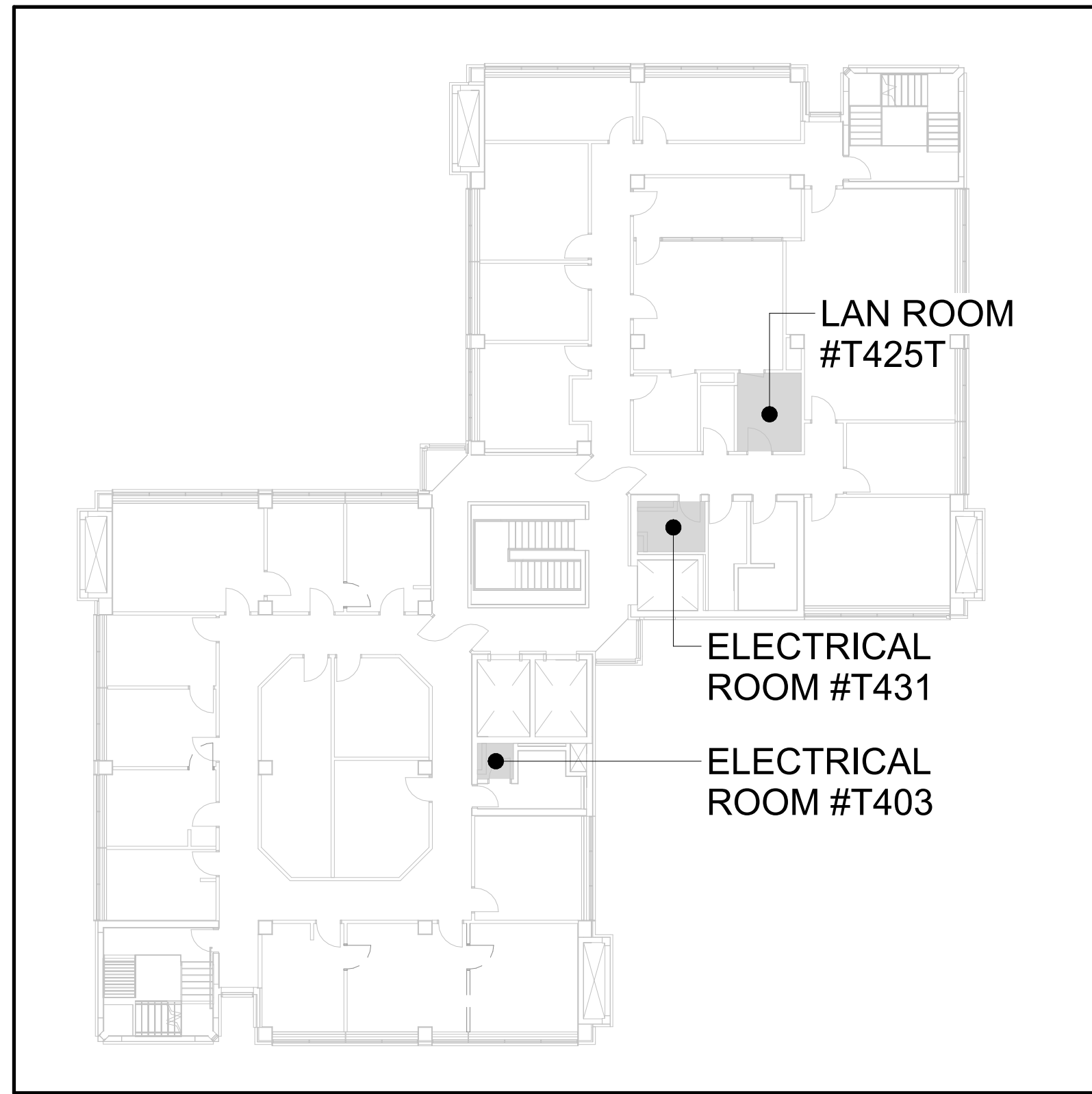
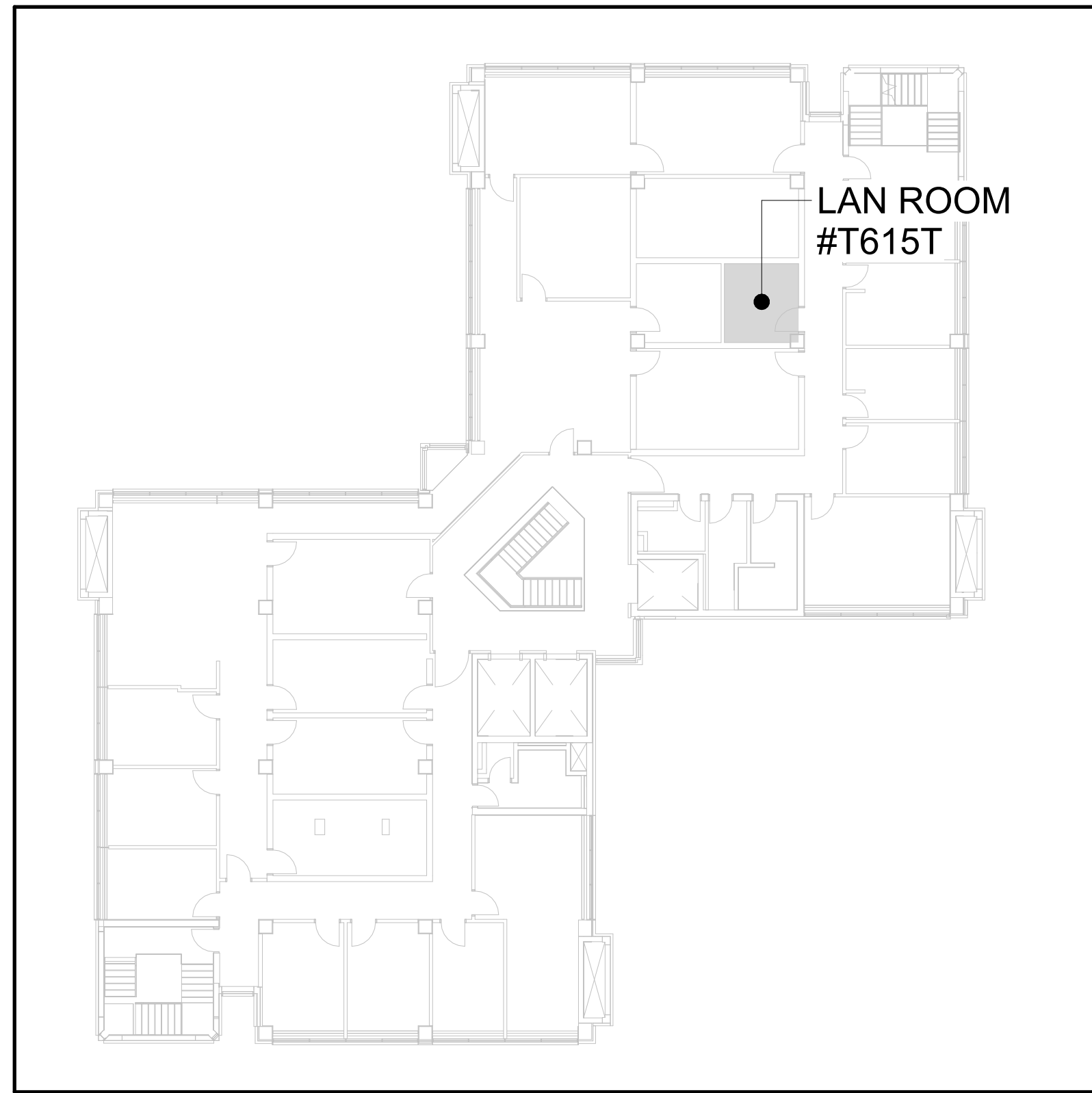
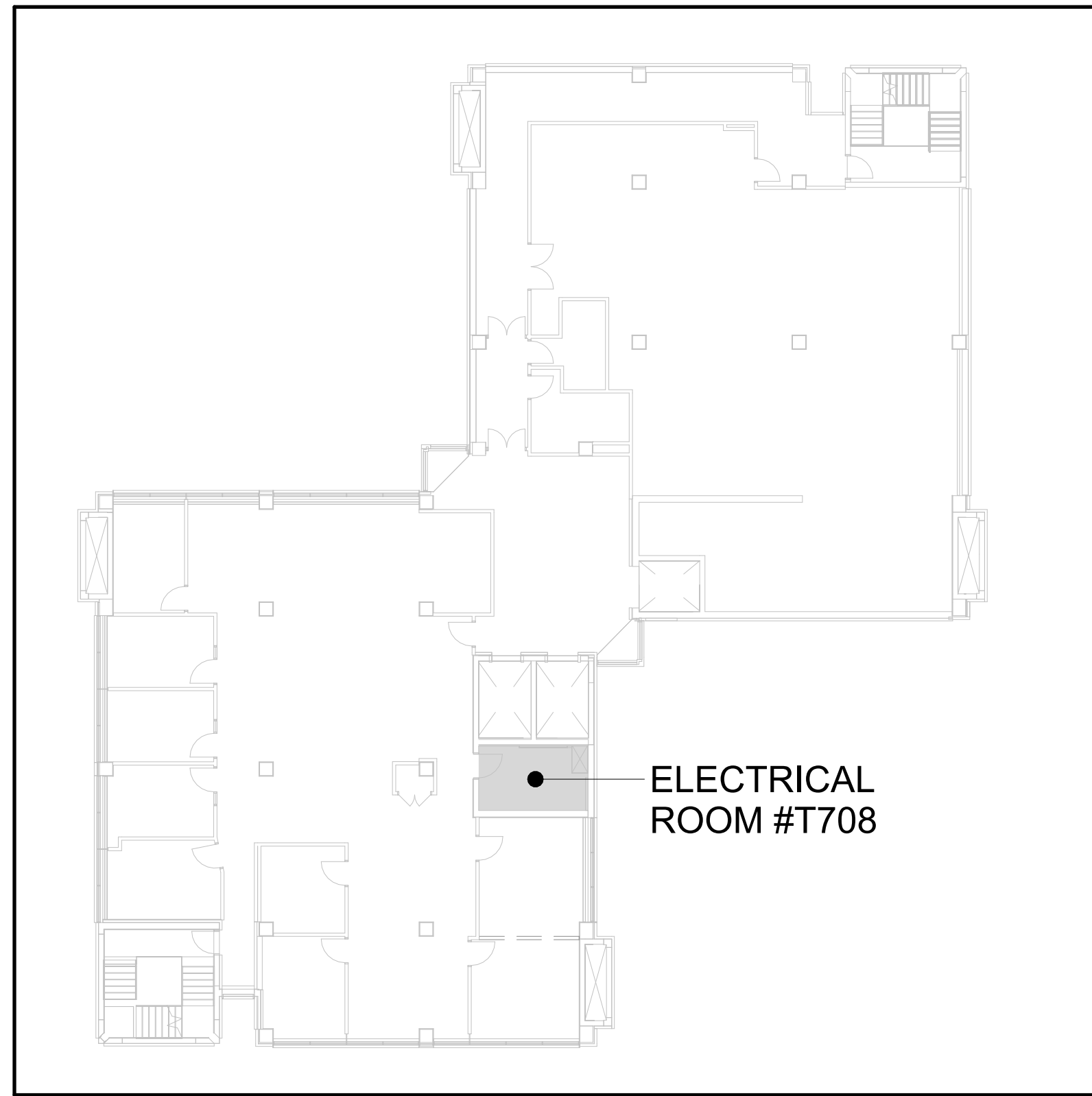
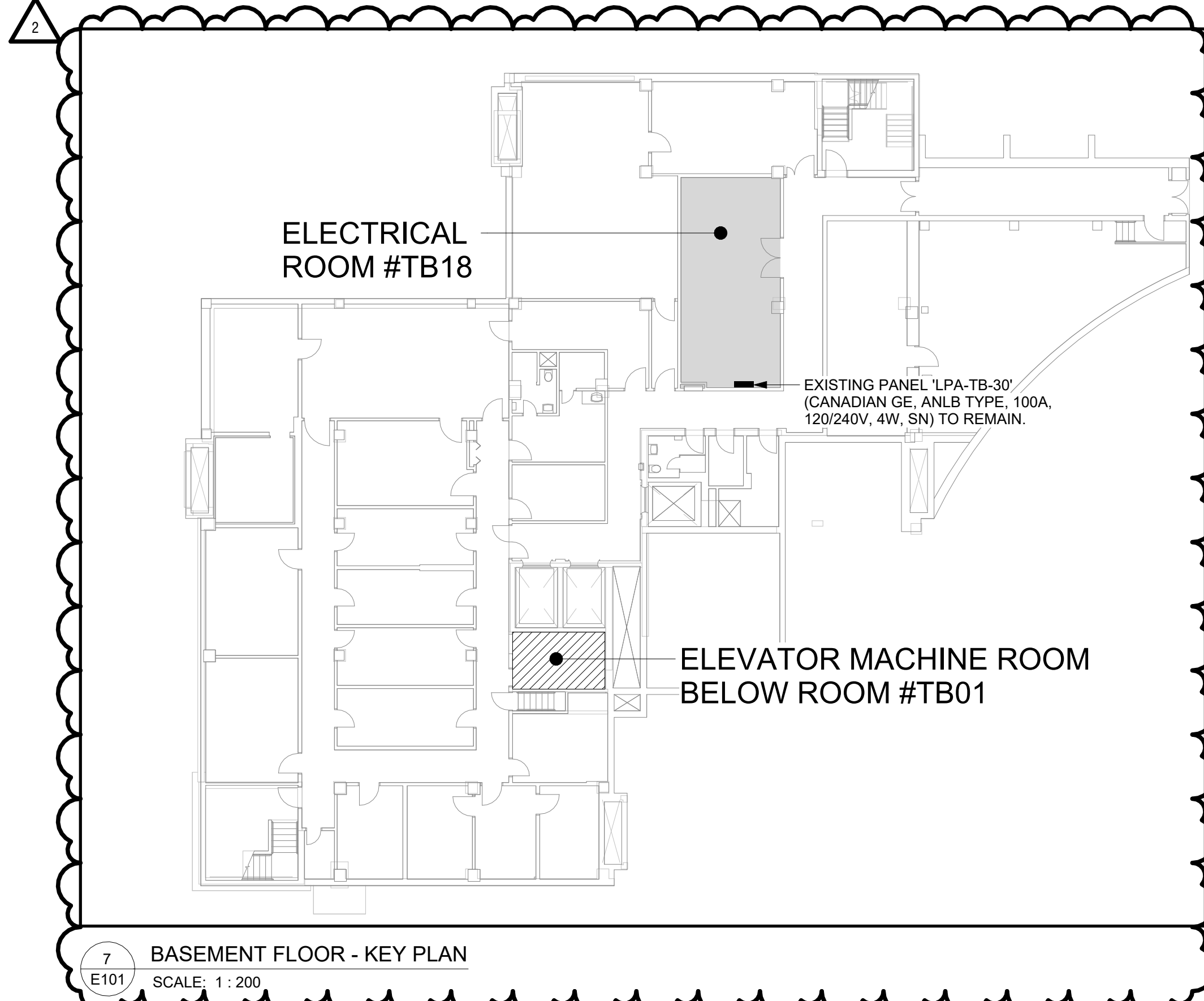
SHEET NUMBER	SHEET NAME
E101	ELECTRICAL LEGEND, DRAWING LIST, KEY PLANS & CAMPUS MAP
E102	ELECTRICAL & COMMUNICATION SPECIFICATIONS
E202	LEVEL 2 FLOOR PLAN - ELECTRICAL DEMOLITION LAYOUT
E203	LEVEL 3 FLOOR PLAN - ELECTRICAL DEMOLITION LAYOUT
E204	LEVEL 4 FLOOR PLAN - ELECTRICAL DEMOLITION LAYOUT
E207	LEVEL 7 FLOOR PLAN - ELECTRICAL DEMOLITION LAYOUT
E212	LEVEL 2 FLOOR PLAN - LIGHTING DEMOLITION LAYOUT
E213	LEVEL 3 FLOOR PLAN - LIGHTING DEMOLITION LAYOUT
E214	LEVEL 4 FLOOR PLAN - LIGHTING DEMOLITION LAYOUT
E217	LEVEL 7 FLOOR PLAN - LIGHTING DEMOLITION LAYOUT
E302	LEVEL 2 FLOOR PLAN - NEW ELECTRICAL LAYOUT
E303	LEVEL 3 FLOOR PLAN - NEW ELECTRICAL LAYOUT
E304	LEVEL 4 FLOOR PLAN - NEW ELECTRICAL LAYOUT
E307	LEVEL 7 FLOOR PLAN - NEW ELECTRICAL LAYOUT
E312	LEVEL 2 FLOOR PLAN - NEW LIGHTING LAYOUT
E313	LEVEL 3 FLOOR PLAN - NEW LIGHTING LAYOUT
E314	LEVEL 4 FLOOR PLAN - NEW LIGHTING LAYOUT
E317	LEVEL 7 FLOOR PLAN - NEW LIGHTING LAYOUT
E401	ELECTRICAL ELEVATIONS
E501	DEMOLITION & NEW SINGLE LINE DIAGRAMS
E502	PANEL SCHEDULES
E503	COMMUNICATION DETAILS
E504	ELECTRICAL RACEWAY ROUTING & SECURITY LAYOUT

- ELECTRICAL GENERAL NOTES
- CONTRACTOR SHALL VISIT THE SITE TO VERIFY THE SCOPE OF WORK & EXISTING CONDITIONS. CONTRACTOR SHALL ALSO EXAMINE ALL EXISTING CONDITIONS WHICH AFFECT THE WORK, PRIOR TO SUBMITTING TENDER PRICE. NO EXTRAS WILL BE ALLOWED FOR FAILURE TO DO SO.
 - VERIFY FIELD MEASUREMENTS AND CIRCUITING ARRANGEMENTS ARE AS SHOWN ON DRAWINGS.
 - VERIFY THAT ABANDONED WIRING AND EQUIPMENT SERVE ONLY ABANDONED FACILITIES.
 - DEMOLITION DRAWINGS ARE BASED ON CASUAL FIELD OBSERVATION. REPORT DISCREPANCIES TO UNIVERSITY OF TORONTO BEFORE DISTURBING EXISTING INSTALLATION.
 - SCHEDULE & COORDINATE ALL WORK WITH U OF T STAFF AND OTHER TRADES ON SITE.
 - ANY INTERRUPTIONS TO POWER SUPPLY TO EXISTING LIGHTING OR DEVICES SHALL BE COORDINATED ON SITE. REFER TO ARCHITECTURAL & MECHANICAL DRAWINGS FOR FULL SCOPE OF WORK.
 - DISCONNECT ELECTRICAL SYSTEMS IN WALLS, FLOORS, AND CEILINGS SCHEDULED FOR REMOVAL.
 - THE CONTRACTOR TO ENSURE CONTINUITY OF SYSTEMS THROUGH RENOVATION SPACE
 - MODIFY/EXTEND/REPLACE EXISTING CONDUITS/WIRING/BACKBOXES AS REQUIRED FOR THE RELOCATED AND EXISTING TO REMAIN EQUIPMENT/DEVICES FOR FULLY OPERATIONAL SYSTEM.
 - PROVIDE BLANK STAINLESS STEEL COVER PLATES WHERE OUTLETS ARE REMOVED FROM EXISTING WALLS TO REMAIN.
 - REROUTE AS REQUIRED TO MAINTAIN CONTINUITY FOR ALL SYSTEMS TO REMAIN WHICH ARE AFFECTED BY THE DEMOLITION OR ALTERATION.
 - REMOVE ABANDONED WIRING TO SOURCE OF SUPPLY.
 - PROVIDE TEMPORARY WIRING AND CONNECTIONS TO MAINTAIN EXISTING SYSTEMS IN SERVICE DURING CONSTRUCTION. WHEN WORK MUST BE PERFORMED ON ENERGIZED EQUIPMENT OR CIRCUITS, USE PERSONNEL EXPERIENCED IN SUCH OPERATIONS.
 - EXISTING ELECTRICAL SERVICE. MAINTAIN EXISTING SYSTEM IN SERVICE UNTIL NEW SYSTEM IS COMPLETE AND READY FOR SERVICE. DISABLE SYSTEM ONLY TO MAKE SWITCH OVERS AND CONNECTIONS. FOLLOW UNIVERSITY OF TORONTO PROCEDURES FOR SCHEDULING SHUTDOWNS. MINIMIZE OUTAGE DURATION.
 - REMOVE EXPOSED ABANDONED CONDUIT, INCLUDING ABANDONED CONDUIT ABOVE ACCESSIBLE CEILING SPACE. CUT CONDUIT FLUSH WITH WALLS AND FLOORS, AND PATCH SURFACES AS REQUIRED.
 - DISCONNECT AND REMOVE ABANDONED PANELEBOARDS AND DISTRIBUTION EQUIPMENT, WHERE INDICATED.
 - DISCONNECT AND REMOVE ELECTRICAL DEVICES AND EQUIPMENT SERVING UTILIZATION EQUIPMENT THAT HAS BEEN REMOVED.
 - DISCONNECT AND REMOVE ABANDONED LUMINAIRES. REMOVE BRACKETS, STEMS, HANGERS, AND OTHER ACCESSORIES. RECYCLE ALL ELEMENTS WHERE POSSIBLE. DISPOSE OF HAZARDOUS MATERIALS AT APPROPRIATE FACILITIES.
 - REPAIR ADJACENT CONSTRUCTION AND FINISHES DAMAGED DURING DEMOLITION AND EXTENSION WORK.
 - MAINTAIN ACCESS TO EXISTING ELECTRICAL INSTALLATIONS WHICH REMAIN ACTIVE. MODIFY INSTALLATION OR PROVIDE ACCESS PANEL AS APPROPRIATE.
 - EXTEND EXISTING INSTALLATIONS USING MATERIALS AND METHODS COMPATIBLE WITH EXISTING ELECTRICAL INSTALLATIONS, OR AS SPECIFIED.
 - CLEAN AND REPAIR EXISTING MATERIALS AND EQUIPMENT WHICH REMAIN OR ARE TO BE REUSED.
 - DISCONNECT & REMOVE EXISTING LIGHTING FIXTURES AND ASSOCIATED WIRING & CONDUIT BACK TO JUNCTION BOX/SOURCE AS INDICATED.
 - DISCONNECT & REMOVE EXISTING DATA & TELEPHONE OUTLETS AND ASSOCIATED CABLING BACK TO RESPECTIVE DATA RACK AND TELEPHONE BACKBOARD AS INDICATED.
 - DISCONNECT & REMOVE EXISTING POWER OUTLETS & DEVICES ALONG WITH ASSOCIATED OUTLETS, CONDUITS & WIRING BACK TO THE RESPECTIVE SOURCE OF ORIGIN AS REQUIRED.
 - DISCONNECT & REMOVE ALL ABANDONED CONDUITS, CABLES & LOOSE BX WIRING AS REQUIRED, WHETHER SHOWN ON THIS DRAWING OR NOT. RE-SUPPORT/ARRANGE EXISTING WIRING IN CEILING SPACE TO SATISFY ESA INSPECTION AS REQUIRED.
 - RELOCATE EXISTING WAP TO NEW LOCATION, AS SHOWN ON DRAWINGS. TEST DATA CABLING AS PER DATA CABLING SPECIFICATION INDICATED IN PROJECT SPECIFICATIONS.
 - PROVIDE FIRESTOPPING AT ALL ELECTRICAL PENETRATIONS THROUGH FIRE SEPARATIONS AS REQUIRED TO MAINTAIN THE INTEGRITY OF THE FIRE SEPARATION. REFER TO ARCHITECTURAL DRAWINGS FOR FIRE SEPARATION LOCATIONS AND FIRE RESISTANCE RATING REQUIREMENTS.
 - ALL NEW ELECTRICAL INSTALLATIONS ARE TO BE SURFACE MOUNTED WITH WIREMOLD, UNLESS NOTED OTHERWISE.
 - CONTRACTOR SHALL PERFORM VOLTAGE DROP CALCULATIONS FOR ALL BRANCH CIRCUITS (LIGHTING AS WELL AS POWER) AND SHALL MAINTAIN VOLTAGE DROP WITHIN PERMISSIBLE LIMITS AS PER O.E.S.C. REQUIREMENTS AND PROVIDE PROPER WIRE SIZES, ACCORDINGLY, PRIOR TO COMMENCING OF ROUGH-IN INSTALLATION. THE VOLTAGE DROP CALCULATIONS SHALL BE BASED ON MAXIMUM CIRCUIT AMPACITY.
 - ALL RECEPTACLES SHALL BE IDENTIFIED USING PROFESSIONAL GRADE, HIGH GLOSS LABELS INDICATING CIRCUIT NUMBER & PANEL SOURCE.
 - PROVIDE UPDATED AND NEW "TYPED" PANEL DIRECTORY CARD FOR EXISTING & NEW PANELS IN THE AREA OF WORK AS REQUIRED.
 - EXISTING FIRE ALARM PANEL (NOTIFIER, MODEL #93030) IS LOCATED IN CACF ROOM #1131 AT 33 URSULA FRANKLIN ST.

DIVISION OF RESPONSIBILITY - DEMOLITION			
CATEGORY	DESCRIPTION	MECHANICAL	ELECTRICAL
WIRING, BACK-BOXES & CONDUITS	LINE VOLTAGE POWER WIRING AND ASSOCIATED BACK-BOXES & CONDUITS		•
	LINE & LOW VOLTAGE CONTROL WIRING AND ASSOCIATED BACK-BOXES & CONDUITS	•	
EQUIPMENT & DEVICES	DISCONNECT SWITCHES, VFDS, STARTERS & LINE VOLTAGE CONTROL DEVICES		•
	LOW VOLTAGE CONTROL DEVICES	•	
COMMUNICATIONS	HEAT TRACING, SNOWMELT SYSTEMS, ELECTRIC COILS & PACKAGED ELECTRIC SPACE HEATING EQUIPMENT	•	
	BAS DATA CABLING, PATCH CABLING & ASSOCIATED CONDUITS FROM MECHANICAL EQUIPMENT CONTROLLER TO FACILITIES & SERVICES (F&S) NETWORK SWITCH	•	
DIVISION OF RESPONSIBILITY - NEW WORK			
CATEGORY	DESCRIPTION	MECHANICAL	ELECTRICAL
WIRING, BACK-BOXES & CONDUITS	LINE VOLTAGE POWER WIRING AND ASSOCIATED BACK-BOXES & CONDUITS		PROVIDE
	LINE & LOW VOLTAGE CONTROL WIRING AND ASSOCIATED BACK-BOXES & CONDUITS	PROVIDE	
	BACK BOXES FOR STEP-DOWN TRANSFORMERS & RELAYS SERVING MECHANICAL EQUIPMENT		PROVIDE
EQUIPMENT & DEVICES	VFDS, STARTERS, SPEED CONTROLLERS & LINE VOLTAGE CONTROL DEVICES SERVING MECHANICAL EQUIPMENT	SUPPLY	INSTALL
	LOW VOLTAGE CONTROL DEVICES	PROVIDE	
	LOW VOLTAGE STEP-DOWN TRANSFORMERS & RELAYS SERVING MECHANICAL EQUIPMENT	SUPPLY	INSTALL
	HEAT TRACING, ELECTRIC COILS & PACKAGED ELECTRIC SPACE HEATING EQUIPMENT	PROVIDE	
COMMUNICATIONS	ELECTRIC SNOWMELT SYSTEMS		PROVIDE
	BAS DATA CABLING, PATCH CABLING & ASSOCIATED CONDUITS FROM MECHANICAL EQUIPMENT CONTROLLER TO FACILITIES & SERVICES (F&S) NETWORK SWITCH	PROVIDE	

NOTES:
1. LOW VOLTAGE IS DEFINED AS BELOW 30 VOLTS.
2. ALL ELECTRICAL WORK INCLUDING CONTROLS WORK SHALL BE PERFORMED BY THE CONTRACTOR ON BEHALF OF THE OWNER THAT FALLS UNDER THE PROVISIONS OF ANY COLLECTIVE AGREEMENTS BY WHICH THE OWNER IS BOUND, OR WHICH THE OWNER IS CONTRACTUALLY REQUIRED TO APPLY TO THE PROJECT. SHALL IN EACH CASE BE PERFORMED BY EMPLOYEES COVERED BY THE APPLICABLE COLLECTIVE AGREEMENT. REFER TO SPECIFICATIONS SECTION 00 21 13 - INSTRUCTIONS TO BIDDERS, AND CDDC2 SUPPLEMENTARY CONDITIONS.

ELECTRICAL UNIT PRICE	
ELECTRICAL CONTRACTOR TO PROVIDE UNIT PRICE TO DISCONNECT AND RECONNECT THE FOLLOWING FIXTURE TYPES AS REQUIRED TO ALLOW ACCESS TO MAIN BRANCH TAKEOFFS FOR AIR AUDIT. REFER TO ARCHITECTURAL AND MECHANICAL DRAWINGS FOR LOCATIONS AND DETAILS.	
•	2' X 4' DRYWALL RECESSED TROFFER LIGHT
•	1' X 4' DRYWALL RECESSED TROFFER LIGHT




University of Toronto
**UNIVERSITY PLANNING,
DESIGN & CONSTRUCTION**

Design & Engineering
255 McCaul Street, 4th Floor, Toronto, Ontario M5T 1W7

This drawing is the property of the University of Toronto, and must be returned upon completion of the work. All information shown on this drawing is for use on this specific project. Contractor must verify all dimensions on the job and report any discrepancies to the Architect before proceeding with the work.

2
E101

SCALE: 1:200

4TH FLOOR - KEY PLAN

LAN ROOM
#T425T

ELECTRICAL ROOM #T431

ELECTRICAL ROOM #T403

481 Spadina Ave
DRAWING SHEET TITLE
**ELECTRICAL LEGEND,
DRAWING LIST, KEY
PLANS & CAMPUS MAP**

DRAWN BY: JW/GDP SCALE: N/A
REVIEWED BY: JW DATE CREATED: 2025-09
UNIVERSITY PROJECT NUMBER: NORTH POINT
P164-25-078

DRAWING NUMBER
E101

REV. NUMBER
2

